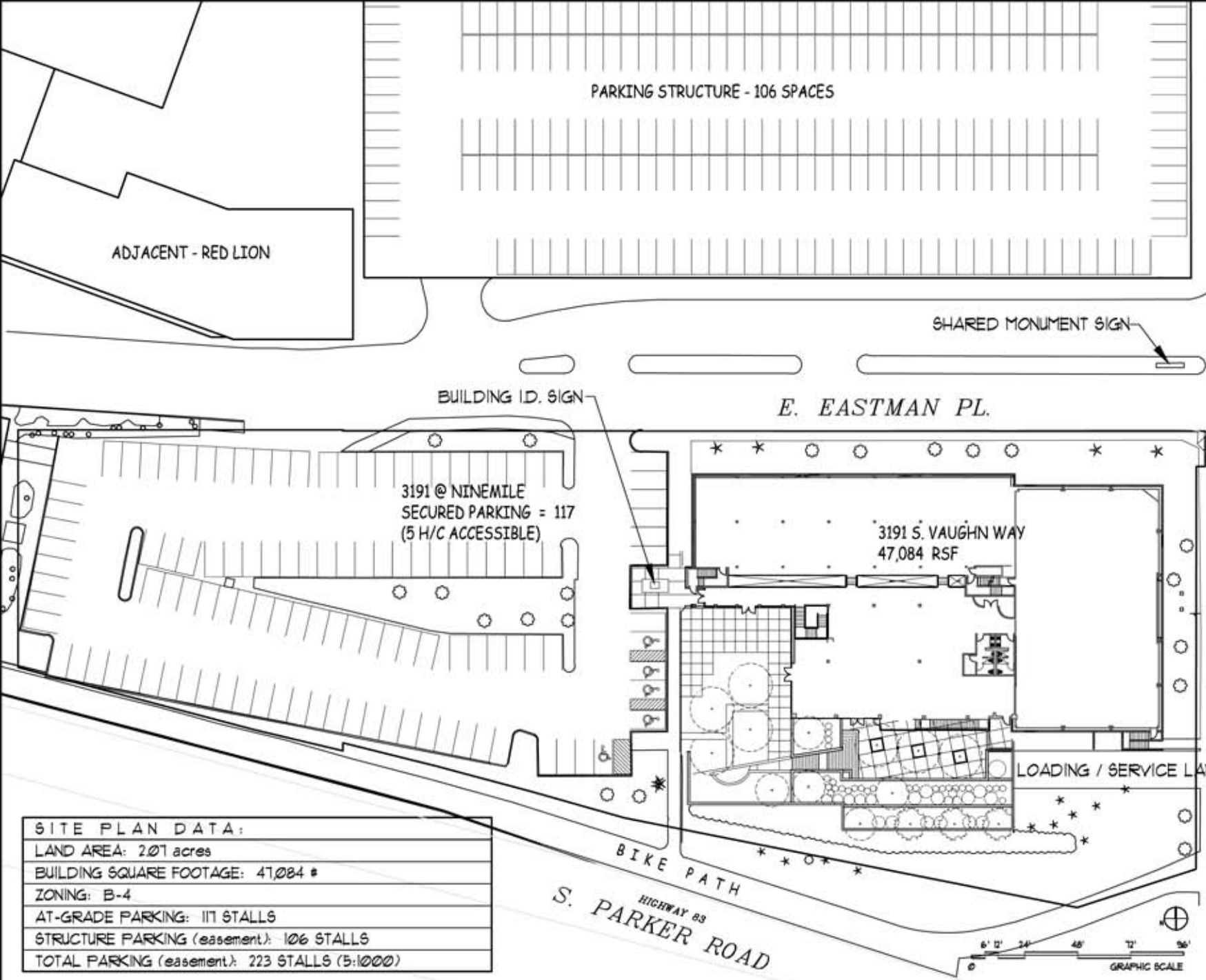




LEWIS HINES ASSOCIATES
ARCHITECTURE &
SPACE PLANNING
2100 LITTLETON BOULEVARD
SUITE 200
LITTLETON, COLORADO 80120
TELEPHONE: 303-758-9989
FAX: 303-758-9990

3191 @ NINEMILE S. VAUGHN WAY
AURORA, COLORADO 80014

JANUARY 16, 2009



3191 @ NINEMILE
SECURED PARKING = 117
(5 H/C ACCESSIBLE)

| |
|---|
| SITE PLAN DATA: |
| LAND AREA: 2.01 acres |
| BUILDING SQUARE FOOTAGE: 47,084 # |
| ZONING: B-4 |
| AT-GRADE PARKING: 117 STALLS |
| STRUCTURE PARKING (easement): 106 STALLS |
| TOTAL PARKING (easement): 223 STALLS (5:1000) |

